



SFA

Small Firms Association

0.2%

250 AND OVER
EMPLOYEES

1%

50 - 249
EMPLOYEES



NUMBER OF FIRMS
BY SIZE (NUMBER OF
EMPLOYEES)

92%

UNDER 10
EMPLOYEES

4%

10 - 19
EMPLOYEES

2%

20 - 49
EMPLOYEES

98% OF ALL FIRMS ARE SMALL

31%
250 AND OVER
EMPLOYEES



% OF PRIVATE
SECTOR EMPLOYMENT
BY FIRM SIZE

28%
UNDER 10
EMPLOYEES

10%
10 - 19
EMPLOYEES

20%
50 - 249
EMPLOYEES

12%
20 - 49
EMPLOYEES

50% OF PRIVATE SECTOR WORKERS
EMPLOYED IN SMALL FIRMS

48.4
GERMANY

48.3
BELGIUM

44.6
IRELAND

44.6
FINLAND

42.5
NETHERLANDS

41.2
PORTUGAL

40.6
SWEDEN

38.3
UK

38.3
AUSTRIA

38.3
LUXEMBOURG

36.7
GREECE

36.2
FRANCE

34.5
DENMARK

33.4
ITALY

32.6
EU

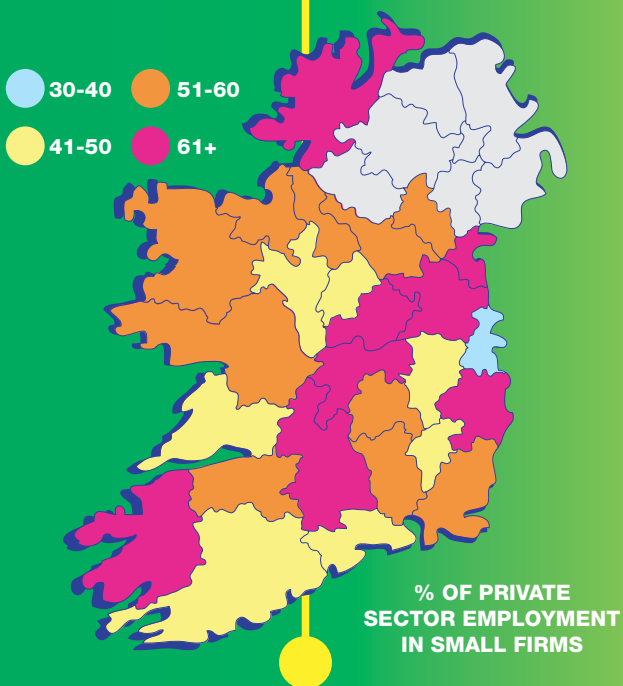
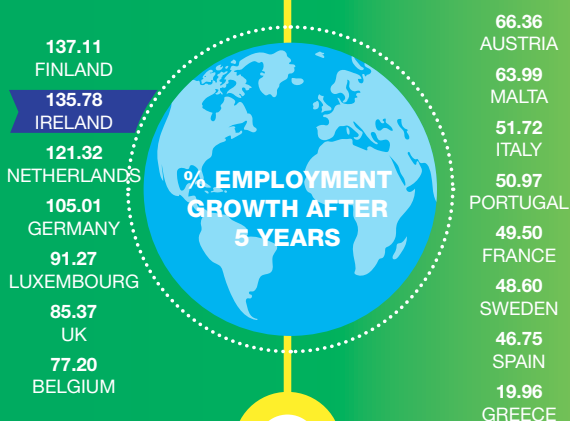
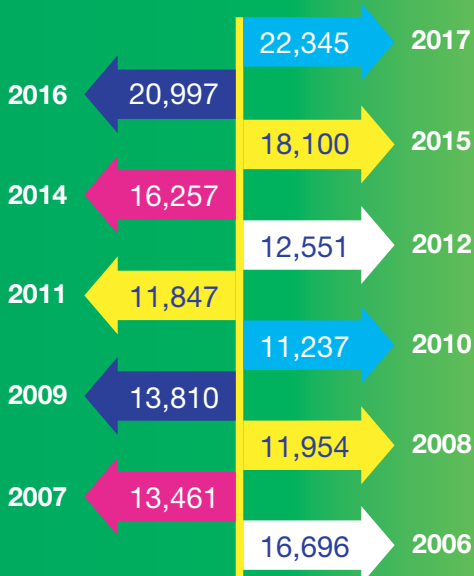
18.7
SPAIN

% OF FIRMS
WITH 10 - 49
EMPLOYEES
INNOVATING

SMALL BUSINESSES

THE BACKBONE OF THE ECONOMY

NUMBER OF START UPS



SMALL FIRMS ASSOCIATION (SFA)

84-86 Lower Baggot Street, Dublin 2

T: +353 (0)1 605 1664 | E: info@sfa.ie | www.sfa.ie



small-firms-association



@SFA_Irl